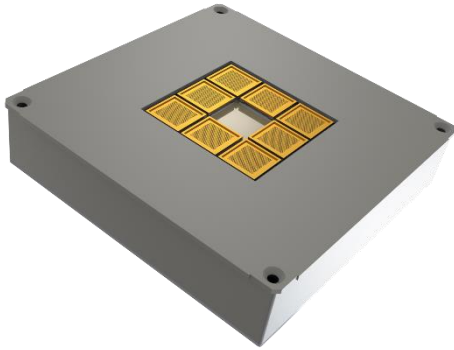


MAX-1

1/3U CubeSat Propulsion



This 1/3U (10cm x 10cm x 3.3cm) system features high-specific impulse electric propulsion that delivers up to 100 N-s of impulse for small satellites. This configuration is compatible with the CubeSat standard.

The system, which includes the thruster head, propellant supply system, and power electronics is unpressurized for simplified integration and launch while providing nearly 2000 seconds of specific impulse.

Specifications

Performance item	Unit	Specification
Axial thrust		Yes
Dimensions	cm ³	10 x 10 x 3.3
Mass	g	300
Total impulse	N-s	86
Specific impulse	s	1800
Thrust	uN	120
Minimum impulse bit	uN-s	0.15
Propellant		Ionic liquid
Power consumption		
Idle	W	0.25
Nominal	W	3
Command/TLM interface		SPI
Operating (survivable) temperature range*	C	-10 to 80 (-40 to 100)
Launch environment vibration spec*		Atlas V profile